



# THE PATRON FIRE FIGHTER



**BEMUS POINT VOLUNTEER FIRE DEPT., INC.**

ALBURTUS STREET, BEMUS POINT, NEW YORK 14712

**James Shephard**

*Fire Chief*



**Bruce Johnson**

*President*

*This is the 4th year for the Patrons Firefighters. Every year your contributions increase. Your show of Financial support is so greatly appreciated. I've always said that the people of the Bemus Point Fire Department District are unique. There are other Fire districts where the priorities of the public's protection are not on the top of the list. This of course, makes it extremely difficult to provide top notch emergency service to the people.*

*Your goes toward the equipment that responds to your call for help. You're there for us and we're there for you. Together as a team we can maintain the quality of life in the area we all so dearly love.*

*Always feel free to stop by the fire station when we are around. We would be glad to show you our equipment. I'm sure you will find it interesting. You have our open invitation, Please stop in.*

*Again, thank you for your financial and moral support. Have a safe year.*

**Fire Chief, Bemus Point Fire Department**

*James Shephard*  
**James Shephard**

## Membership List:

Scott Begert  
 Bill Briggs  
 Daniel Burns  
 Sharon Caloren  
 Dennis Carlson - *Asst. Chief*  
 Brian Carnes  
 Marian Crandall  
 Bill Crandall - *1st Asst. Chief*  
 Herbert Crandall  
 Doug Crist  
 Bryan Dahlberg - *Past Chief*  
 David Engblom  
 Ted Farnham  
 Jim Farnham  
 Ken Gausman  
 David Graham  
 Jeffrey Graham  
 David Gustafson - *Captain*  
 Bruce Johnson - *Pres. / Captain*  
 Elizabeth Johnson  
 Kathleen Johnson  
 Vern Johnson  
 Bruce Lovejoy

Robert Magnuson - *2nd Asst. Chief*  
 Barry Oste  
 Brenda Phillips  
 Jeffrey Present  
 Randall Present  
 Brian Raines  
 Evy Hancock  
 John Hancock  
 Kurt Holm  
 Kim Rambacher  
 Raymond Roberts - *Past Chief*  
 Peter Samuelson  
 James Shephard - *Fire Chief*  
 Robert Stahley - *Past Chief*  
 Jon Stahley - *Past Chief*  
 Carl Steenburn  
 Keith Swanson  
 Gertrude Thompson  
 Ronald Thompson  
 Janet Trussell  
 Mike Winnie  
 William Woodfield

## CHIEF OFFICERS



*Pictured here, as grissley a sight as it may be, are the Chief Officers of the Bemus Point Fire Department.*

From Left to Right: Fire Chief James Shepard, 1st Asst. Chief William Crandall, 2nd Asst. Chief Robert Magnuson, Asst. Chief Dennis Carlson

## ADMINISTRATIVE OFFICERS

*These People are responsible for the Adminstrative Financial aspects of the Fire Department Management.*



From Left to Right: President Bruce Johnson, Financial Secretary Ted Farnham, Rec. Secretary Sharon Caloren, Vice President Peter Samuelson, Treasurer Jeff Present

## LINE OFFICERS



From Left to right: Lieutenant Ted Farnham, Captain David Gustafson, Captain Bruce Johnson, Lieutenant Sharon Caloren, Captain Peter Samuelson

*These Individuals are responsible for implementation on the scene of the general orders given by the fire chief. They manage teams of fire fighters/rescue workers during the incident process, also responsible for apparatus & equipment.*

## DIANA ROBERTS - BEMUS POINT FIRE DEPARTMENT QUEEN



*From Left to Right: Diana Roberts - Queen, Amy Jowett - Runner-Up, Owner/Driver of Antique Car - Carl Steenburn*

Diana Roberts of R.D. #3, Bemus Point Was Crowned queen for our 1989 Fire Department. She is the daughter of Raymond Roberts and Marilyn Robert. She is 18 years old and a senior at Maple Grove Junior Senior High School where She is active in the Student Council and a Class Officer, Junior Varsity & Varsity Cheerleader,

Active in Track & Cross Country. Outside Actives include Volunteer work for the special olympics. This fall she plans on attending Jamestown Community College where she will be studing Special Education for two years and then plans on going to Plattsburg College in Plattsburg, New York.

## AMY JOWETT - FIRST RUNNER - UP

She is the Daughter of William Jowett and Eileen Jowett of 2 Lakeview Ave., Bemus Point. Amy is 17 year old, and very active in the extra curricular activities at Maple Grove High Playing Tennis for five years, varsity basketball for four years and varsity softball for six yrs.

She has been named to the All star team. She also is secretary for both Student Council & honor society, which she participated in for six years. The school newspaper and year book staff, French Club, Chorus, Band And Homecoming queen have kept this young girl quite busy.

*We would like to wish both Diana & Amy the Best of Luck in the Future.*

## GAMES OF CHANCE

It is another year for our games of chance. It is alot of Fun for the night. The state has now added a new attraction **FISH BOWL TICKETS**. Everyone likes to play them. The tickets are of course in addition to our Usual activities of blackjack, craps, Money Wheel and Bang. Make sure to stop in this Summer on Friday, August 25th. Remember, The money we make from our Games of Chance goes strictly for needed equipment.



In April of this year, a nossle blew off our deluge set. When we were discharging a large volume of water into the lake, for training purposes.

Our most expendable Fire Fighter was used to retrieve the nossle from the icy waters; Kim Rambacher was the man for the job.

## SPECIAL RECOGNITION

Long Point State park Superintendent Jim Lindblom retired this past May. Jim was a steady patron Fire

fighter for us. He always supported us in emergency situations, training and the 10K race. We wish Jim and Betty the very best.

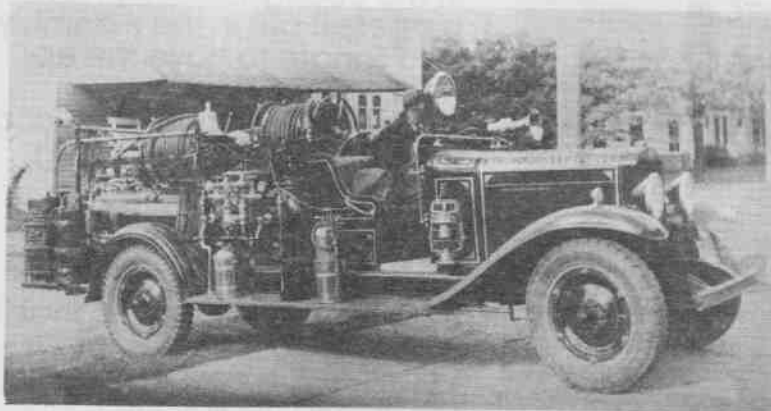
# FIRE ENGINES

## AN HISTORICAL OVERVIEW

The history of the American Fire Service has been fast paced. Many changes have taken place in a relatively short period of time. Everyone loves a Fire Engine. The problem has always been how to get large quantities of water on a fire quickly. Our first true American Fire Chief was good ole Benjamin Franklin. Ben started with men and leather

Buckets. Then Hand powered pumping carts were the rage.

This is a photograph taken in 1941 of the Bemus Point Village Hall and Fire Station. The Buildings next door to the left was the Frank Guignon sheet metal works. Pictured here are the two pieces of equipment owned by the the Fire Department at that time.



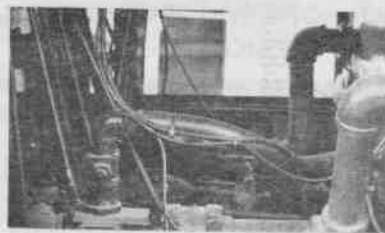
The one on the right is a 1922 Larrabee pump-er. Members prefabricated the chassis with a rotary gear pump and hose bed. It probably could pump somewhere around 250 gallons per minute. It also had a tank of water in the

same 250 gallon capacity range.

Bemus Point recently took delivery on a new Pierce Fire Engine purchased through Lenhart Nelson at Churchville Fire Equipment in Jamestown. Take a look at these numbers -

pump capacity in excess of 1,300 gallons per minute. Tank Capacity - 1,250 Gallons. Diesel Engine - 400 Cummins. Construction Materials - Galvaneal Aluminum (Elaborate) Top Mounted pump Panel for better pump operator observation. (4) Self contained breathing apparatus across the back jump seats that enable the Fire Fighters to have complete Fire

Fighting Gear donned when the engine rolls onto the scene. Made out of Aluminum and galvan which is a special steel that has a rust preventive chemical impregnated into its weight.



## SPECIAL RECOGNITION

We would like everyone reading the Patrons Fire Fighter to be aware of a very generous action by Cummins Engine Company. Last year the Cummins Engine Foundation donated

the diesel 400 engine that is in our new Fire engine. This allowed other monies to be used on other vital equipment.

*Thanks Cummins!!!*

# Special Thank You List!

- Acu-Rite
- Mayor Richard Babbage and The Bemus Point Village Board
- Bemus Point Hardware
- Bemus Point School District
- Chautauqua Brick Co.
- Cummins Engine Co.
- Sheriff John Bentley & His Staff
- Nate Dreyer - The Sail Loft
- Arthur R. Gren
- Civil Defense Director

- Wanda Gustafson & Her Staff
- The Jock Shop
- Supervisor Arden Johnson & The Town of Ellery Board
- Mike Kelly / John Lansbanel & His Staff at The Long Point State Park
- Chautauqua County Fire Coordinator Neil McNeight and His Deputies
- Doug Oste
- Pepsi Cola

- Thom & Cheryl Shagla & The See-Zurh House
- Bayview Canoe Club
- Village DPW Director Norman Skillman and Jesse Kelderhouse
- County Legislator Bob Stanley
- Sandy Stanley and The Penny Saver Staff
- Shore Acres Boat Yard - Dick Sparling
- WJTN / SE-93
- WKSN / WHUG

## 911 ENHANCED UPDATE

**We Give You An Update Every Year Now**

But we think we're making slow but sure progress. You'll recall we are pushing to get this new computerized emergency call in system county wide. Once the call is made your location is specifically locked in on the computer screen to the dispatcher. If the caller can't talk or describe the situation, the dispatcher can send help to that location, regardless. It's something we desperately need in Chautauqua county.

You may also recall that we in the county currently have proposed bills in the Assembly and Senate to have the expense of this added onto everyone's telephone bill and the most fair way of paying for the system. This movement initiated by Chautauqua County has now gained wide support throughout the state. We are optimistic that it will pass, both houses this year. Maybe next year we'll be able to tell you we finally made it. Until that time, make sure to dial 386-6005 for Fire / Rescue emergencies.

**REMEMBER  
TO  
BUCKLE-UP  
TAKE IT FROM US  
SEAT BELTS WORK!!**

## FALLEN FIRE FIGHTERS



**Venn Johnson  
Clark Proctor  
Jim Gustafson  
Art Murdock**

Whenever, you see the black banner hung above our door - It is Our way of honoring a fallen Fire Fighter. We will leave it up for one month. After the death of one of our Collegues.

## SMOKE DETECTORS

Make Sure to check your Smoke Detectors Today! Put a fresh battery in it, mark the date you put the new battery in on the side of the battery. Check it monthly. Every one should have at least 6 in their homes ranging from the cellar to the attic. Even if the battery tests good monthly, for a year, you should still change it annually.

**If You Wish A Receipt For Tax Purposes,  
Please Enclose Coupon & We Will Validate It For You.**

NAME: \_\_\_\_\_

ADDRESS: \_\_\_\_\_

PHONE: \_\_\_\_\_ DONATION \$ \_\_\_\_\_

COMMENTS: \_\_\_\_\_

**NOTE: If You Have Any Special Concerns, Safety Concerns or Questions,  
Please Indicate Them On This Form  
& We Will Call You Concerning Your Comments.**