



24



THE PATRON FIRE FIGHTER

BEMUS POINT VOLUNTEER FIRE DEPT., INC.

ALBURTUS STREET, BEMUS POINT, NEW YORK 14712

James Shephard
Fire Chief



Bruce Johnson
President

A MESSAGE FROM THE FIRE CHIEF

A big thank you is in order for all those patron fire fighters of the Bemus Point Fire District. Last year your donations were generous and deeply appreciated. It enabled us to bring the best in public safety protection to our area. You can read in this newsletter what was purchased with your money.

I would like to remind you that this newsletter will be placed on your door and various newsstands throughout the community. We will not knock on your door for donations. We, therefore, trust that in the next couple of months you will remember us with a donation. You of course can enclose your check in the envelope provided or give it to a Bemus Point Fire Fighter. Again, thank you for your fine show of support.

The volunteer fire service is one of the last vestiges of the true American spirit. Our roots go back to the settlers of the New America in Colonial times. Those traditions are carried on today.

I invite anyone that may be so moved to stop in and see us should they ever wish to be part of this proud tradition. We are constantly in need of good, capable individuals. The intrinsic rewards and personal satisfaction is well worth it.

We wish you a safe and happy year.

James A. Shephard
Fire Chief

Membership List:

Scott Begert
 Daniel Burns
 Michael Burns
 William Briggs
 Sharon Caloren
 Dennis Carlson - Treasurer, Capt.
 Brian Carnes
 Marian Crandall
 Herbert Crandall
 William Crandall -1st Asst. Chief (Past Chief)
 John Crist
 Fred Kryway
 Bryan Dahlberg - Bldg. Super (Past Chief)
 Richard Darroch
 David Engblom
 Peter Evert
 Ted Farnham - Financial Sec.
 Jim Farnham
 Ken Gausman
 David Graham
 Jeffrey Graham
 David Gustafson - Lieutenant
 Bruce Johnson - President
 Elizabeth Johnson

Kathleen Johnson
 Arnold Koch - Lieutenant
 Doug Loop
 Bruce Lovejoy
 Robert Magnuson -3rd Asst. Chief
 Barry Oste - 2nd Asst. Chief
 Brenda Phillips
 Jeffrey Present
 Randall Present
 Brian Raines
 Evelyn Hancock - Secretary
 Hillary Rambacher
 Martin Rambacher
 Raymond Roberts - (Past Chief)
 Peter Samuelson - Vice President
 James Shepardson, Jr.
 James Shephards - Chief
 Robert Stahley - (Past Chief)
 Jon Stahley - (past Chief)
 Carl Steenburn
 Keith Swanson - Captain
 Gertrude Thompson
 Ronald Thompson
 William Woodfield



Kneeling: Fire Chiefs, Rob Magnuson, Barry Oste, Jim Shephard, Bill Crandall
1st Row: Ray Roberts, Trudy Thompson, Arnie Koch, Carl Steenburn, Bruce Lovejoy, Marian Crandall, Evie Reynolds, Jon Stahley
Back Row: Keith Swanson, Bryan Dahlberg, Pete Samuelson, Brian Raines, Fred Kryway, Ron Thompson, Bruce Johnson, Dave Gustafson, Bob Stahley

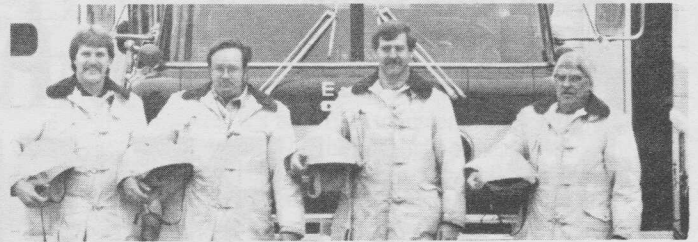
Special Thank You List:

- * Bruce Arisman
- * Mayor Richard Babbage and The Bemus Point Village Board
- * Bemus Point Hardware
- * Bemus Point School District
- * Chautauqua Brick Company
- * Sheriff John Bentley and His Staff
- * Nate Dreyer
- * Gren Recycling
- * Civil Defense Wanda Gustafson and Her Staff
- * The Jock Shop
- * Supervisor Arden Johnson and the Town of Ellery Board
- * L-S Areo Marina-Dave & Jean Lawson
- * Jim Lindblom & Staff at Long Point State Park
- * Gene Madden - Red Cross
- * Chautauqua County Fire Coordinator Neil McNight and his Deputies
- * Doug Oste
- * Pepsi Cola
- * Thom Shagla
- * Bob & Linda Sharpe
- * Village of Bemus Point DPW Director Norman Skillman
- * Shore Acres Boat Yard - Dick Sparling
- * County Legislator - Bob Stanley
- * Sandy Stanley & The Penny Saver Staff
- * WJTN/SE-93
- * WKSJ/WHUG

REMEMBER TO BUCKLE UP
 We want to remind you that the Bemus Point Fire Department supports the use of seat belts in your vehicle. We are constantly reminded, sometimes very graphically, of the importance of this. It is especially essential that children remain in their seats and be buckled in. Take it from some people who know - Buckle up for safety.

BLOOD PRESSURE TESTING
 Anyone should feel free to stop by the Fire station anytime they see someone around, to have their blood pressure taken. It only takes a few minutes and it could well be worth your time.

CHIEF OFFICERS



Pictured Above, as grisly a sight as it may be, are the Chief Officers of the Bemus Point Fire Department. From Left to Right: Third Assistant Fire Chief Robert Magnuson, Second Assistant Fire Chief Barry Oste, Fire Chief Jim Shephard, and First Assistant Fire Chief William Crandall.

ADMINISTRATIVE OFFICERS



Front Row Left to Right: Secretary; and Pete Evie Hancock, Recording Secretary Bruce Johnson, President. These People are responsible for the Administrative/Financial aspects of the Fire Department Management.
 2nd Row Left to Right: Denny Carlson, Treasurer; Ted Farnham, Financial

LINE OFFICERS



Front Row left to right: Captain Dave Gustafson, Captain Bruce Johnson, 2nd Row left to right: Captain Denny Carlson, Lieutenant Ted Farnham, Lieut. Pete Samuelson. These Individuals are responsible for the implementation on the scene of the general orders given by the fire chiefs. These individuals manage teams of fire fighters/rescue workers during the incident process. They are also responsible for the individual apparatus and equipment of the fire department.

BEMUS POINT FIREFIGHTERS NEED YOU!

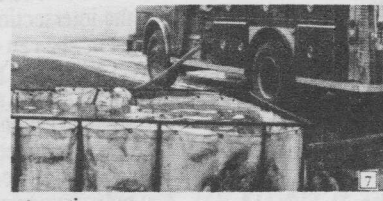
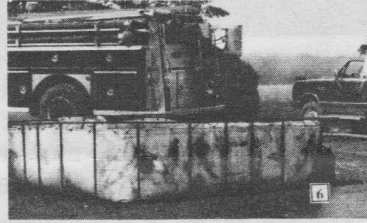
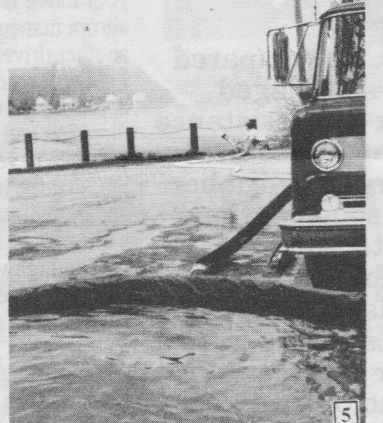
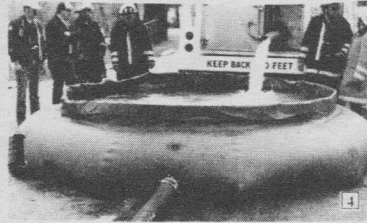
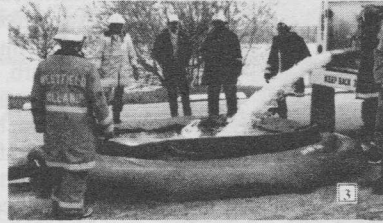
If you are looking for something rewarding, think of joining our team. Stop in & see us. We are there every Tuesday evening 7:00 - 11:00 P.M.

HIGH TECH AND INGENUITY

Rural America Fire Fighting requires a lot of ingenuity on the part of the fire departments. Examples of these are the various portable water tanks that are used when hydrants or direct water sources are not available. These situations are commonly encountered.

Bemus Point Fire Department has two such portable water ponds. Photograph 6 shows a steel framework portable pond with a capacity of 2,000 gallons. The liner is constructed of a durable plastic material. The portable tank can be folded or set-up in less than one minute. We would like to note that the pond was constructed as a donation from Bob Wannewetsch about eight years ago.

Photographs 1-5 show a recently purchased portable tank with your donations. This is another excellent example of the combination of high technology and ingenuity in the fire service. This tank is basically a 3,000 gallon capacity bag with a floatation ring around the top. It is stored in a large bag in a compartment in an engine. When needed, it is dumped out of the engine and laid in the desired area. Tankers dump into the tank while



the floatation ring rises with the water level. The drafting engine hooks its suction line into a connector at the bottom of the tank and drafts from the tank.

this is so successful that ISO (Insurance Services Office) is conducting research into giving non-fire hydrant rated insurance districts the same insurance credit rating as those districts that have hydrants.

The other method used by the Bemus Point Fire Department to supply water is through our large diameter (3 Inch) Fire hose. Engine 442 carries a large supply of this hose on its bed. The end of this hose is usually dropped at the fire scene and the truck goes to the water source. It then hooks its hard suction hose into the water source (Example: Lake, Pond, Swimming Pool, Creek) and drafts through the truck pump and discharges out this hose to the fire scene engine.

Of course every situation is different and requires different setups. The main thing is that it is done quickly and efficiently. This highly valued water is used efficiently through proper training in application and state-of-the-art nozzles. These nozzles control the gallon per minute flow and the pattern of the water. All these factors combined create what we call a "Quick Attack".

Fire Department Ladies Auxiliary

Over the years, we have received excellent support from the Ladies Auxiliary. This support comes in many forms. One of the main priorities of the Auxiliary is to provide food, clothing and aid to the firefighters/rescue workers on a major incident. This is a very important function, many times this type of an operation could last for hours and days. The Auxiliary is always there with this vital function.

The Auxiliary has also supported us with money and gifts. For example, they have purchased rescue tools and firefighter protective clothing for the four Fire chiefs. The money for these items comes from their various fund raising activities. Anyone interested in serving in this capacity, should feel free to contact any of the ladies listed below that are members of the Auxiliary; they would welcome anybody that is willing to volunteer their time.

President - Marilyn Roberts
Vice President - Jeanne Shepardson
Secretary - Peggy Swanson
Treasurer - Cindy Steenburn

Ronna Lipsey
Anne Dahlberg
Carol Linblom
Marcia Rambacher

Jennifer Barkham-1988 Fire Dept. Queen

Every year Bemus Point Fire Department Proudly elects a Queen to represent the Department at various functions and parades, including the Stockton Gala Days. The queen competes in various categories. The winner of this county competition, represents the Chautauqua County Fire Service. It is always a difficult choice. The various candidates should be commended.

This year's Queen is Jennifer Barkham of 80 Lakeside Drive in Bemus Point. Jennifer plans on attending Grove City College this fall, majoring in Communication Arts with a minor in Business. She is currently a Senior at Maple Grove Jr.-Sr. High School. Jennifer is the daughter of Harry

and Kathleen Barkham.

Runner-up this year was Wendy Prieur of Overlook Terrace in Bemus Point. Wendy is also a Senior at Maple Grove, and is planning on attending JCC in the fall, where she will major in Business. Wendy is the daughter of Ralph and Corinne Prieur.



Left To Right: Wendy and Jennifer
 Our Deepest thanks to all the girls who participated and our Congratulations Jennifer & Wendy.

STATE-OF-THE-ART PROTECTIVE CLOTHING

Last year we reviewed the expense for outfitting each individual fire fighter / rescue workers. Here is a picture of just some of the individual protective



individual gear in their vehicles. Much of this gear pictured was purchased over the last year with donations and taxation money. Also pictured is an old photograph of fire fighters of the Bemus Point Fire Department in the

1950's. As compared to our space aged nomax fire resistance clothing, these fire fighters wore rubber coats, some leather helmets, some an early form of fiberglass and plastics. Boots were a rubber composition with no protective plating.

Pictured To The Left Are
Front Row Squatting:
 Dale Bottomley
 Back Row Left to Right: Bob Stahley, Fire Chief, Rex Ward, Don Buck, Don Johnson and Herman Johnson.



gear that hangs on the wall in the fire station. Many of these people live in close proximity. Others carry their



FLASHING RED LIGHTS, SIRENS? DON'T PANIC - OBEY THE LAW

It's important to remember that whenever you see the flashing red light or hear the siren or bell of an ambulance, fire, police or public utility emergency vehicle, the law requires you to immediately pull over to the right-hand curb of the road and stop without blocking any intersection. If you're traveling on a one-way street with more than two traffic lanes, you must immediately pull over to the nearest curb, clear of any intersection.

When you find yourself in this situation, don't panic! First, before pulling over to the curb, check the traffic conditions through your rearview mirror as well as over your shoulder. Slow your speed and pull over, making sure your move is made safely. Never make an abrupt maneuver which could endanger another driver.

The law requires you to pull over to the appropriate curb of the road regardless of the direction and the lane the approaching emergency vehicle is traveling in. Remember, too, that the law forbids you to follow a fire department vehicle responding to an alarm at a distance of less than 150 meters (500 Feet).

The highway Traffic Act permits an emergency vehicle to cross an intersection against a red traffic light signal provided its driver has given adequate warning of its approach by the continuing sounding of its siren, and the flashing of its red lights. It must also come to a complete stop before entering the intersection so the driver can determine if he or she can cross safely.

Likewise, you may see a vehicle using a blue light. This is a non-emergency volunteer fire fighter responding to a call. The blue light does not give the driver priority over the regular traffic. It is for identification purposes only. However, it is essential that you attempt to grant this vehicle the same courtesy to let them by. Remember, These people must get to the fire station or the emergency scene to perform their vital functions.

**If You Wish A Receipt For Tax Purposes,
Please Enclose Coupon & We Will Validate It For You.**

NAME: _____

ADDRESS: _____

PHONE: _____ DONATION \$ _____

COMMENTS: _____

**NOTE: If You Have Any Special Concerns, Safety Concerns or Questions,
Please Indicate Them On This Form
& We Will Call You Concerning Your Comments.**